

# BKI



BETH KRUPA INTERIORS



## BETH KRUPA INTERIORS

DESIGN STUDIO & HOME BOUTIQUE

19 E Elm Street

Greenwich, CT

203. 890. 9292

[bethkrupainteriors.com](http://bethkrupainteriors.com)

Instagram: [bkrupainteriors](https://www.instagram.com/bkrupainteriors)

Photography: Jim Fuhrmann



Beth Krupa, Allied ASID,  
President ASID CT, GREEN AP

## Notebook

Goodbye 2020, and hello 2021! We've been staying close to home, but the Connecticut design community continues buzzing along.

**DesignDot** expanded its services to provide homeowners with direct access to sourcing and ordering goods via an in-house concierge design service. Monthly subscriptions allow members access to various vendors at advantageous pricing.

The Institute of Classical Architecture & Art awarded architecture and interiors firm **Hendricks Churchill** the 2020 Stanford White Award for Excellence in Classical and New Traditional Design in the interior design category. The award-winning project, named New Farmhouse, is in Sharon. The home features Americana and sustainable design.

You can now call **Beth Krupa** Madam President. Krupa has been named President of the American Society of Interior Designers, Connecticut chapter. The designer plans to focus on education and the exchange of information during her term. "I believe that shared knowledge builds our profession and gives us all a stronger foundation and confidence to service our ever-evolving clientele," says Krupa.

Congratulations to Michael Benjamin and Chuck Willette, who were named partners at the architectural firm **Brooks & Falotico**. Both men have been part of the firm for a combined thirty-four years, bringing a wealth of knowledge and experience to their elevated roles.

Do you have news to share? Email Lynda Simonton at [lsimonton@nehomemag.com](mailto:lsimonton@nehomemag.com).

## REQUIRED READING

While away a cold winter afternoon with these new design monographs featuring Connecticut homes.



Like the best design books, **Katie Ridder: More Rooms** (Vendome Press, \$70, 2020), written by Jorge Arango with photography by Eric Piasecki, is equal parts instruction and inspiration. Readers will linger on the pages, mesmerized by Ridder's exquisite use of color and the beautiful bespoke details that define the designer's signature look.

On the more practical side, Ridder takes us room by room, sharing her advice for creating furniture and lighting plans and layering materials.



The pages of **Décors Barbares: The Enchanting Interiors of Nathalie Farman-Farma** (Vendome Press, \$60, 2020) depict a luxurious world where colors and layers reign supreme. The pattern party won't surprise the many fans of the designer's globally influenced textile line, *Décors Barbares*. And since the book features Farman-Farma's family homes, including her Greenwich childhood abode, the spaces are delightfully personal. Photographer Miguel Flores-Vianna expertly captures the romance and richness of the properties.



## Innovative Trends for the Future of Home Design

### Virtual Event

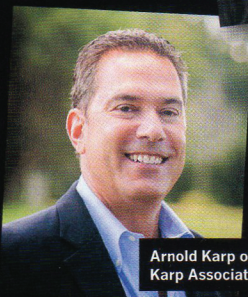
What's next for home design? What does 2021 have in store for design professionals in Connecticut? A November webinar hosted by *New England Home Connecticut* and moderated by Tyra Dellacroce of Connecticut Stone answered these questions and more during an in-depth discussion. The panelists, including Arnold Karp, Robin Kencel, Jeff Kaufman, Beth Krupa (the new president of the Connecticut chapter of the American Society of Interior Designers), Chris Barre, and Tara Vincenta, shared their predictions for the new year. In case you missed the live event, you can catch the full discussion online at [nehomemag.com/innovative-trends-for-the-future-of-home-design/](http://nehomemag.com/innovative-trends-for-the-future-of-home-design/).



Tyra Dellacroce of  
Connecticut Stone



Robin Kencel of The  
Robin Kencel Group



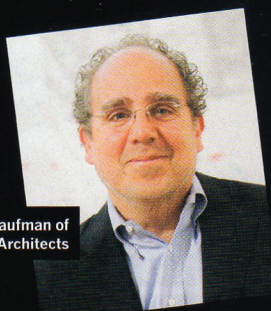
Arnold Karp of  
Karp Associates



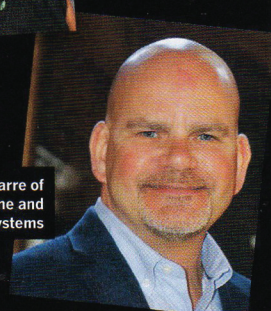
Beth Krupa of  
Beth Krupa  
Interiors



Tara Vincenta of  
Artemis Landscape  
Architects



Jeff Kaufman of  
JMKA Architects



Chris Barre of  
Smarthome and  
Theater Systems



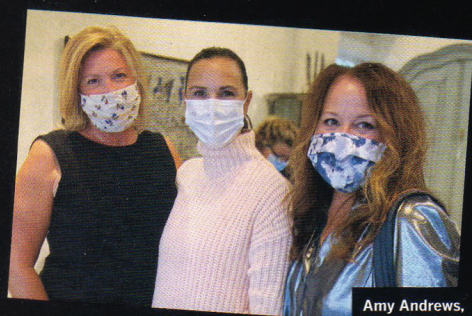
Elizabeth Aiken  
and Charles Hilton

Classic Greenwich  
Houses by Charles Hilton

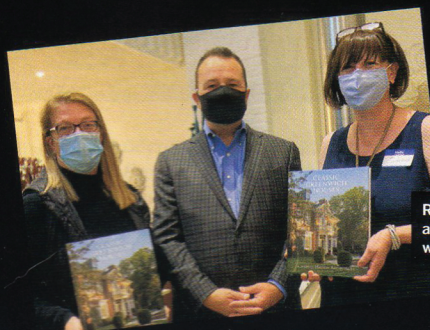


## Charles Hilton Book Signing

In October, Rhonda Eleish and Edie van Breems hosted an intimate gathering in their Westport shop, Eleish Van Breems Home, to celebrate the launch of architect Charles Hilton's book, *Classic Greenwich Houses*. The 240-page book features nine homes designed by Charles Hilton Architects. The book also showcases the work of Connecticut designers Amy Andrews, Isabelle Vanneck, Christina Lake, and the late Jane Gleason as well as celebrated New York designer Miles Redd.

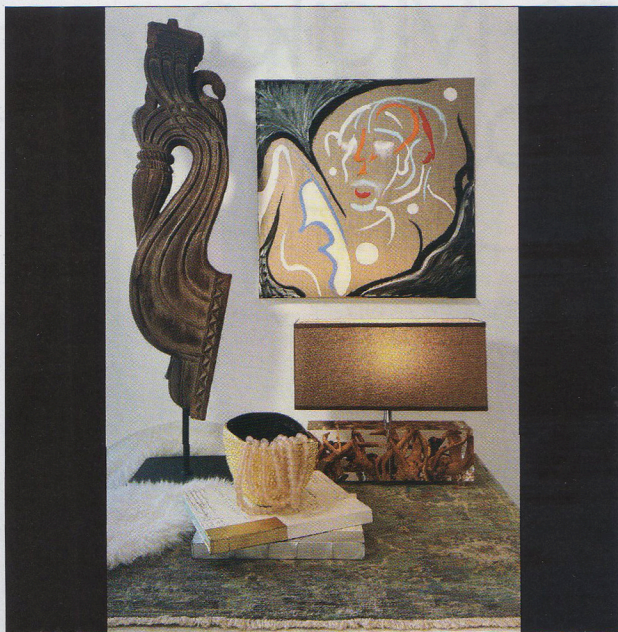


Amy Andrews,  
Christina Lake,  
and Karen Bow



Rhonda Eleish (left)  
and Edie van Breems  
with Charles Hilton





Beth Krupa Interiors Design  
Studio & Home Boutique  
features one-of-a-kind  
sculptures, lighting, pillows  
& throws, antiques, modern  
decor and original artwork  
—all with a collected vibe.

**BKI**  
BETH KRUPA INTERIORS

Design Studio & Boutique  
19 E. Elm Street  
Greenwich, CT 06830  
203-890-9292  
[bethkrupainteriors.com](http://bethkrupainteriors.com)