

**Wilton: Entertaining
The Goal:**

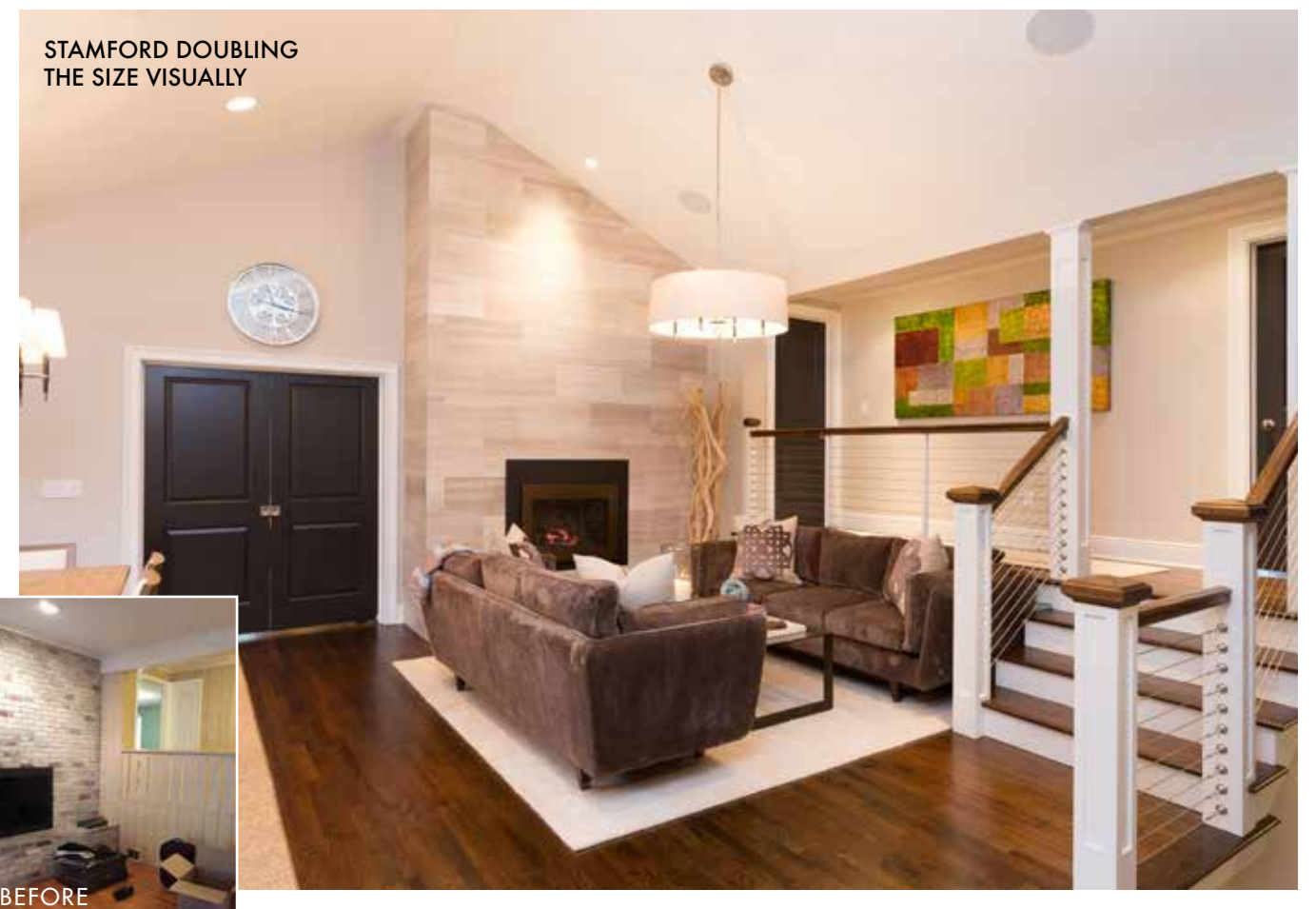
This traditional home required a full audio smart-control system throughout the first floor so parties and family gatherings could flow effortlessly. Otherwise, cosmetically and from a design point of view, we added a sense of vibrancy and joy, uplifting the mood and feel of the home for this young, entertaining family and their visitors.

**Greenwich/Riverside:
Kitchen Update
The Elements:**

This home had an excellent kitchen layout and solid cabinetry. We knew we needed design elements that would create a vivacious and contemporary space for our clients who have young children and like to entertain. We achieved this by custom designing the hickory range hood, door, and cabinet fronts, adding a quartz backsplash and island, and "leathering" absolute black granite to give it a chic, textured perimeter countertop.

**Stamford: Doubling the
Size Visually
The Challenge:**

This charming home had low ceilings, flat carved panels for a railing, painted paneled walls, a narrow stair, and small doorways. By removing the bulky brick fireplace hearth while converting it to gas, raising the ceilings to 15 feet, redesigning the entire stair and rail, and widening the doorways, we visually doubled their living space. This project won the 2016 national Interior Design Society, Designer of The Year for Living Spaces \$30,000 and Above.



BKI
BETH KRUPA INTERIORS

Beth Krupa Interiors
259-A Sound Beach Avenue
Old Greenwich, CT 06870
203-890-9292
bethkrupainteriors.com

ids winner
INTERIOR DESIGN SOCIETY
DOTY Designer of the YEAR
2016

Custom Home

Custom Home Builder
Magazine Top 10 Interior
Designers in CT February 2018